

HAPPY CITY

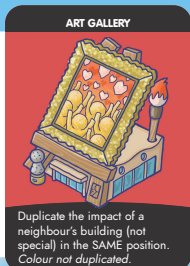
FAQ

SPECIAL BUILDINGS EXPERT VERSION

«Neighbours» means the opponent on your right and the opponent on your left. With 4 and 5 players, you have more opponents than neighbours.

The word «Income» implies all impacts with this symbol:  (such as Snooker hall, Barber shop, etc.), but not Video Game Arcade or The Louvre.

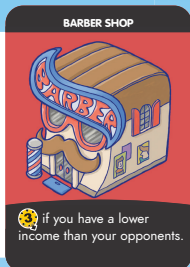
ART GALLERY



«Impact» means all incomes and Hearts/Inhabitants

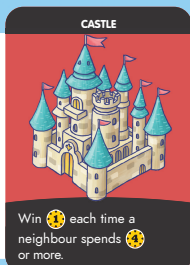


BARBER SHOP



The comparison with your opponents' incomes takes into account the impacts of other special buildings.

CASTLE



Only the amount actually spent is taken into account. The Castle does not benefit from reductions (Station, Port, Airport, Hotdog Shop and Underwater tunnel).

CHEOPS PYRAMID



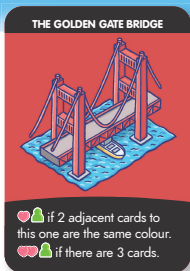
E.g.: if this special building is the 9th card of a city, it duplicates the 9th card of a neighbour's city.

CONCERT ARENA

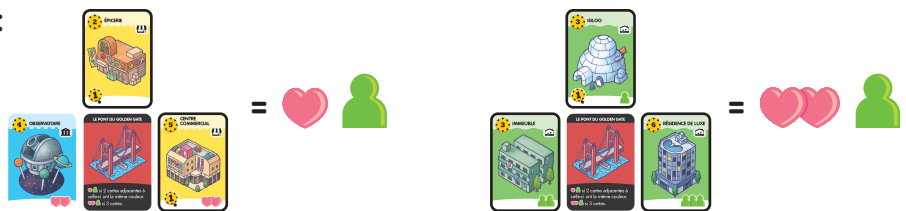


- Immediately brings in twice their income (then it does not prevent the normal income in the income phase).
- At the end of the game, if the city's income is 7 for example, then 7 points are deducted from the result of multiplying X .

THE GOLDEN GATE BRIDGE



Examples :



ORGANIC MARKET



Crossed out Hearts/Inhabitants are taken into account.

E.g.: 4 + 4 - 1 (Haunted House) = +3 incomes

THE LOUVRE



- These additional coins are not part of the income.
- The opponent is not necessarily the same for the 2 turns.
- The Barber's income includes the (if the Barber receives it).



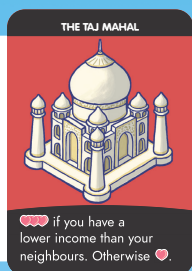
THE SPHINX

- If you don't want to duplicate an opposing special building, then you must duplicate one at random (and you don't know it before you draw it).
- Only the name side impact of the special building is duplicated, and it is taken into account as if it were placed in front of you.



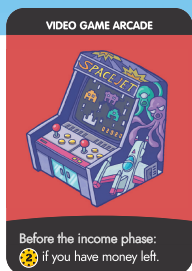
THE STATUE OF LIBERTY

You are allowed to discard the card you used to meet the conditions of this special building (3rd blue card).



THE TAJ MAHAL

The comparison with your neighbors' total incomes is made when counting end-of-game points. Take into account the impacts of special buildings (Escape game, Barber shop, Organic market, Bakery ...).



VIDEO GAME ARCADE

- «Money» means one coin at least.
- These 2 coins are not part of the income.
- You can win these 2 coins at the last turn, just before counting points (money is a tie-breaker).